




## 1 Opening the SIK menu

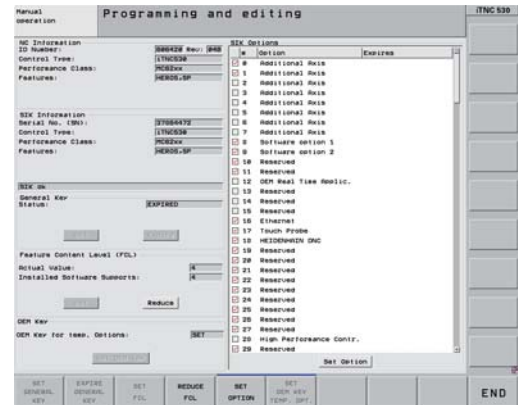
The System Identification Key (SIK) contains the NC software license for enabling control loops and software options.


The SIK number provides the control with a unique identification.

### Procedure on iTNC 530:

Proceed as follows to find the SIK number of your control:




-  ▶ Select the **Programming and Editing** operating mode
-  ▶ Press the **MOD** key
- ▶ Enter the code number **SIK**
-  ▶ Press the **ENT** key
- ▶ The TNC displays the SIK menu on the screen.

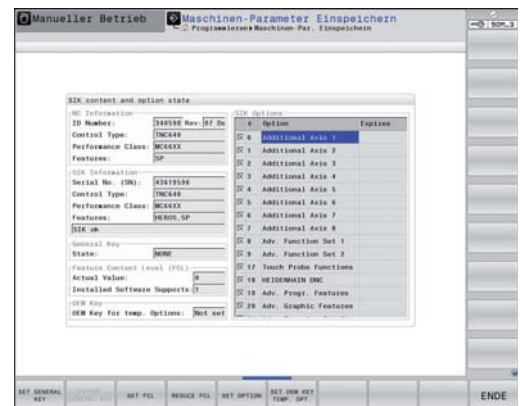



 You can find the SIK number in the **Identifier (SIK ID)** field under "SIK Information" in the SIK menu.

### Procedure on TNC 640, TNC 620, TNC 320 and TNC 128:

Proceed as follows to find the SIK number of your control:



-  ▶ Select the **Programming** operating mode
-  ▶ Press the **MOD** key
- ▶ Enter the code number **SIK**
-  ▶ Press the **ENT** key
- ▶ The TNC displays the SIK menu on the screen.

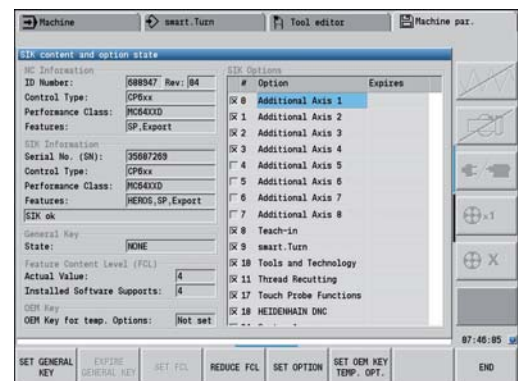



 You can find the SIK number in the **Serial No. (SN)** field under "SIK Information" in the SIK menu.

### Procedure on CNC PILOT 640 and MANUALplus 620:

Proceed as follows to find the SIK number of your control:

-  ▶ Select the **Organization** operating mode
-  ▶ Press the Key soft key
- ▶ Enter the code number **SIK**
- ▶ Confirm with **OK**
- ▶ The control switches to the **Machine par. programming** submode and displays the SIK menu.



 You can find the SIK number in the **Serial No. (SN)** field under "SIK Information" in the SIK menu.